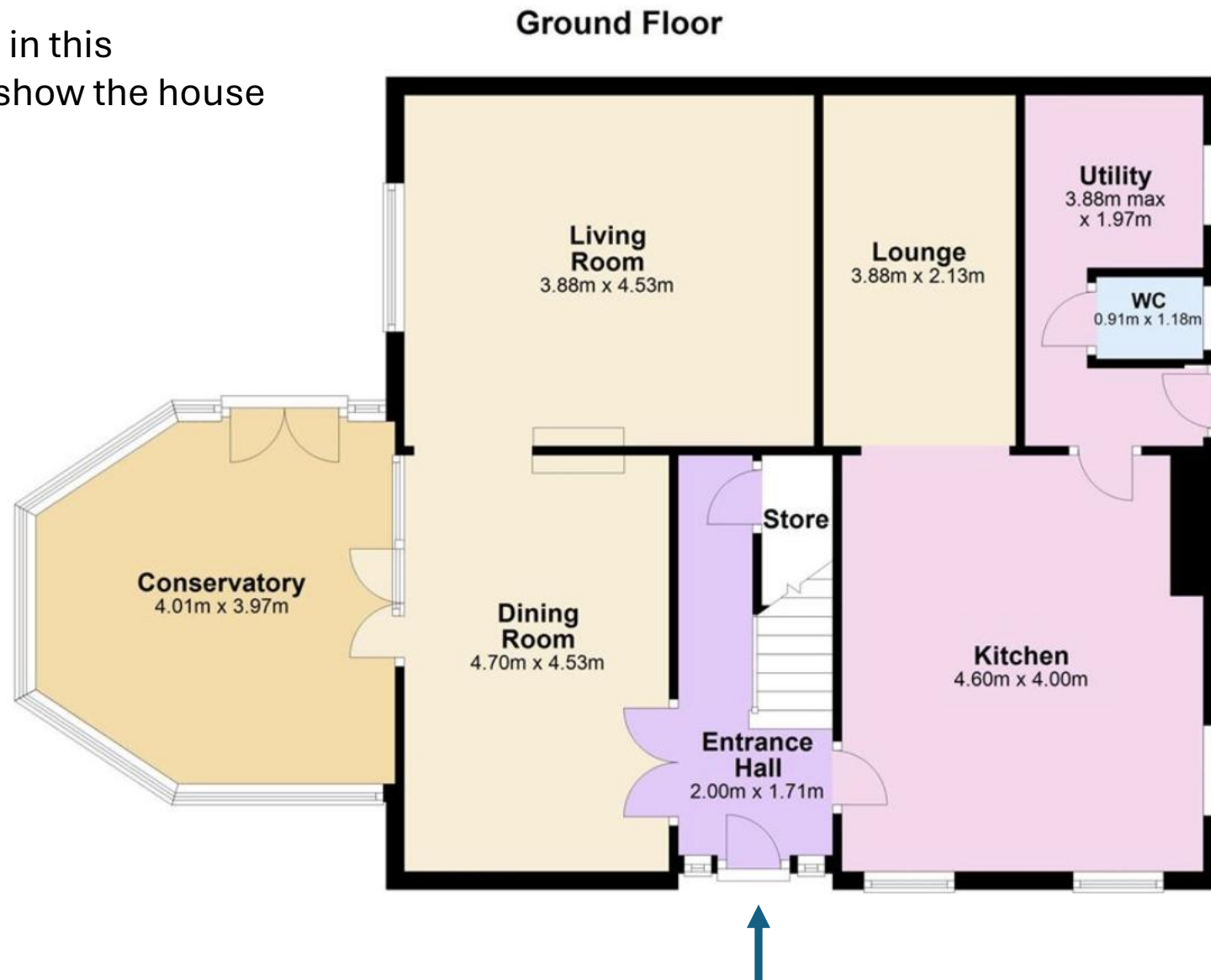


The images in this document show the house as it is now



Back door... I will need one, please include one in the design and make sure I can reach it without walking through someone's bedroom

Front door (again, I don't want to walk straight into someone's bedroom)

Some walls are very old,  
think, supporting walls  
others; others are new  
construction

Extended in  
mid 1980s



### Ground Floor



Original late 19<sup>th</sup>  
century stone  
cottage with  
**THICK** walls  
(we're talking 20  
inches here... a  
pain to remove,  
so please avoid  
where possible)





canal

### First Floor

↑  
South



Please notice the shape – it's square (no bits sticking out anywhere)

Please provide **one** design option that redesigns the house interior (both floors) in its current size and shape (square).

Please provide a second option that extends this (to the right) and incorporates the garage.







Front of house (north facing). In almost constant shade, dark, cold, damp... put rooms this side like utility, pantry, toilet etc.



Side of house (east facing) – note the position of the conservatory, it sits towards the front of the house, not the middle



Back of house (South facing).

Note: the house sits down in a hole – there are **zero** views of the countryside from the ground floor.

